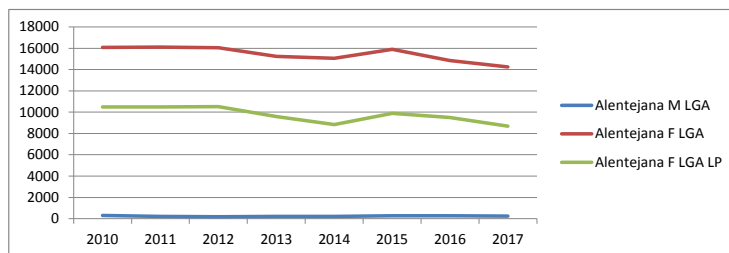
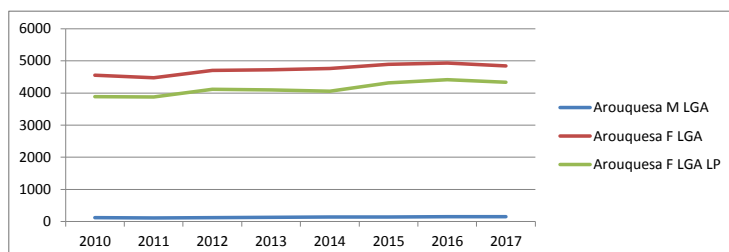


BOVINOS

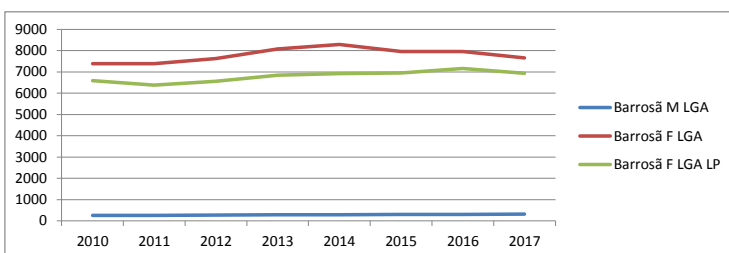
	Alentejana		
	M LGA	F LGA	F LGA LP
2010	315	16076	10486
2011	220	16101	10501
2012	187	16039	10517
2013	213	15239	9588
2014	212	15046	8850
2015	266	15886	9902
2016	261	14836	9511
2017	250	14236	8697



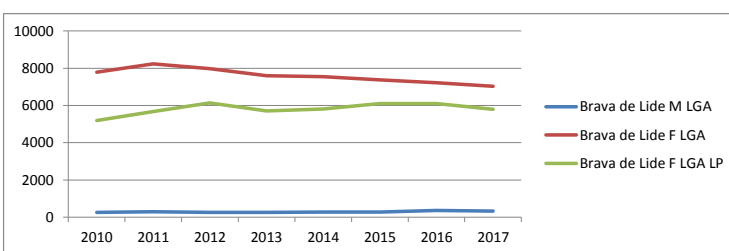
	Arouquesa		
	M LGA	F LGA	F LGA LP
2010	120	4555	3889
2011	112	4478	3881
2012	125	4701	4111
2013	131	4725	4092
2014	144	4759	4053
2015	144	4892	4314
2016	150	4935	4411
2017	155	4847	4337



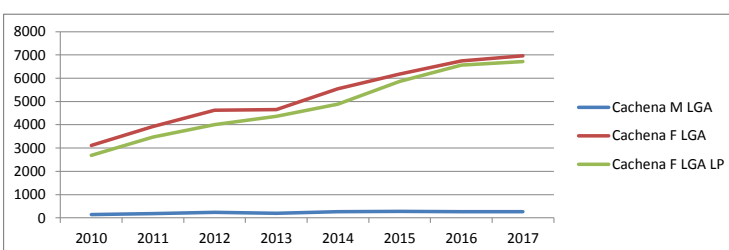
	Barrosã		
	M LGA	F LGA	F LGA LP
2010	254	7390	6584
2011	266	7391	6375
2012	273	7632	6560
2013	287	8074	6839
2014	296	8281	6922
2015	310	7963	6954
2016	312	7964	7159
2017	322	7663	6933



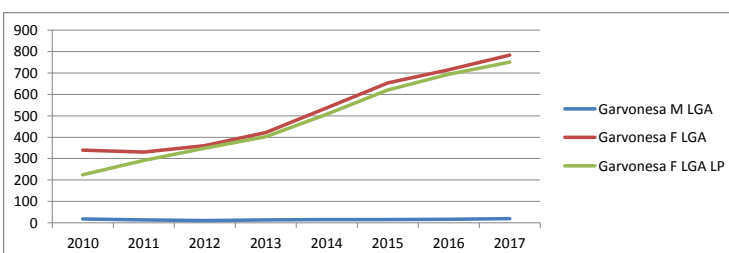
	Brava de Lide		
	M LGA	F LGA	F LGA LP
2010	256	7785	5184
2011	290	8241	5681
2012	263	7985	6145
2013	253	7591	5712
2014	274	7547	5817
2015	272	7369	6105
2016	362	7218	6095
2017	319	7030	5789



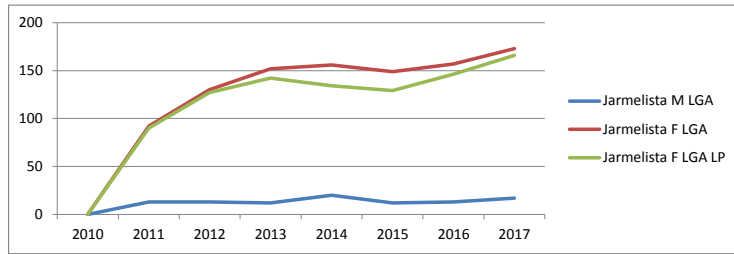
	Cachena		
	M LGA	F LGA	F LGA LP
2010	135	3107	2681
2011	187	3920	3467
2012	241	4632	4002
2013	201	4648	4364
2014	258	5545	4886
2015	276	6178	5860
2016	267	6742	6569
2017	258	6958	6714



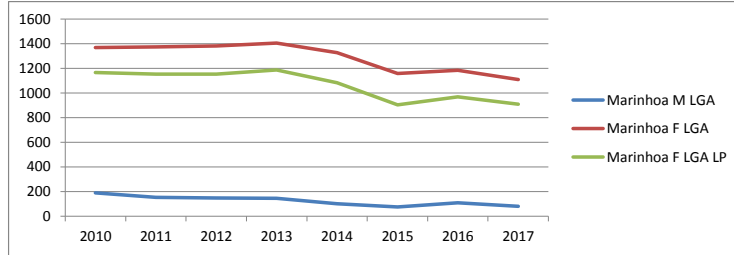
	Garvonesa		
	M LGA	F LGA	F LGA LP
2010	18	340	225
2011	14	331	292
2012	11	361	349
2013	13	421	402
2014	15	537	507
2015	15	654	620
2016	16	715	694
2017	19	783	750



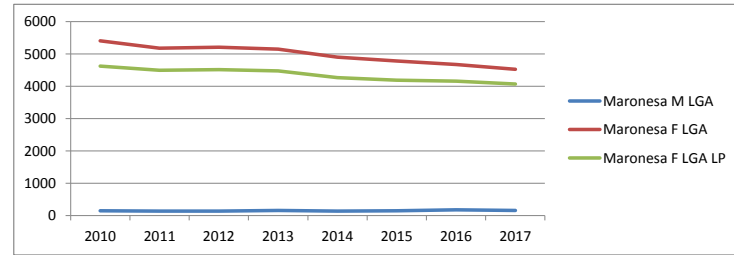
	Jarmelista		
	M LGA	F LGA	F LGA LP
2010	-	-	-
2011	13	92	90
2012	13	130	127
2013	12	152	142
2014	20	156	134
2015	12	149	129
2016	13	157	146
2017	17	173	166



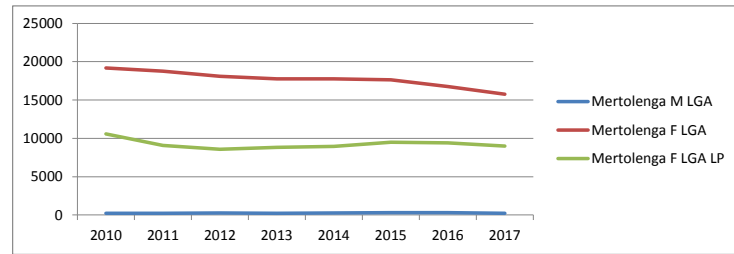
	Marinhosa		
	M LGA	F LGA	F LGA LP
2010	189	1368	1167
2011	154	1374	1154
2012	148	1383	1154
2013	145	1405	1187
2014	101	1327	1083
2015	75	1159	904
2016	110	1184	969
2017	80	1108	910



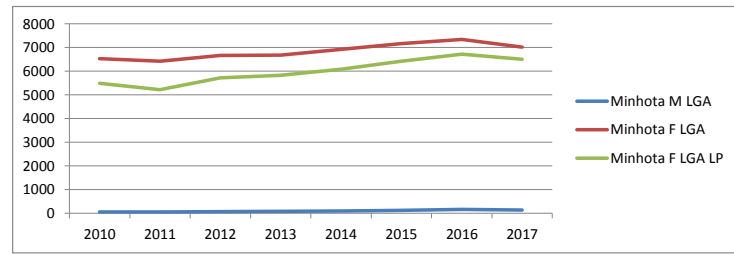
	Maronesa		
	M LGA	F LGA	F LGA LP
2010	142	5407	4628
2011	139	5182	4501
2012	136	5214	4516
2013	151	5155	4477
2014	132	4905	4269
2015	150	4780	4185
2016	172	4680	4157
2017	155	4528	4072



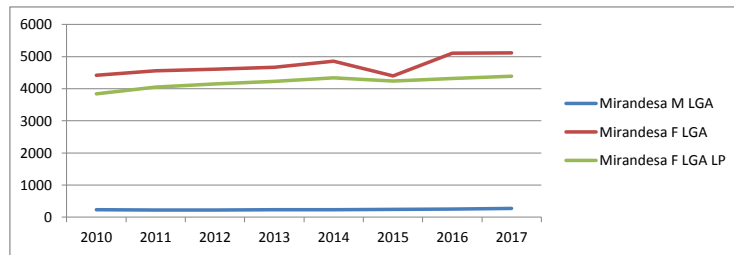
	Mertolenga		
	M LGA	F LGA	F LGA LP
2010	237	19162	10598
2011	241	18765	9076
2012	252	18098	8583
2013	239	17780	8823
2014	268	17755	8943
2015	290	17647	9492
2016	291	16762	9426
2017	242	15737	8989



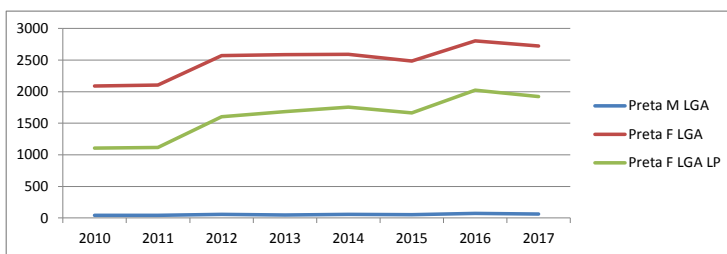
	Minhota		
	M LGA	F LGA	F LGA LP
2010	64	6535	5497
2011	64	6422	5217
2012	75	6673	5719
2013	83	6686	5833
2014	99	6928	6088
2015	124	7167	6429
2016	168	7341	6721
2017	146	7018	6501



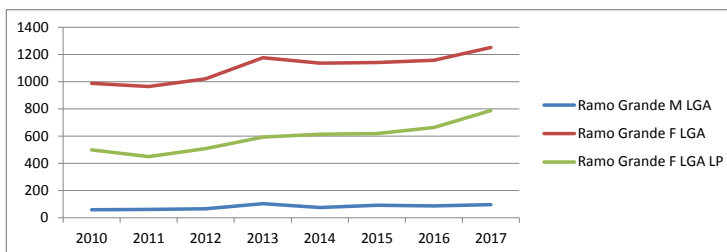
	Mirandesa		
	M LGA	F LGA	F LGA LP
2010	235	4414	3840
2011	227	4555	4051
2012	225	4603	4153
2013	234	4666	4227
2014	234	4856	4336
2015	241	4394	4241
2016	258	5101	4321
2017	275	5119	4387



	Preta		
	M LGA	F LGA	F LGA LP
2010	43	2088	1106
2011	45	2106	1117
2012	56	2571	1601
2013	50	2588	1682
2014	56	2590	1754
2015	52	2485	1665
2016	75	2804	2025
2017	65	2725	1922



	Ramo Grande		
	M LGA	F LGA	F LGA LP
2010	59	988	499
2011	61	964	449
2012	66	1020	509
2013	105	1175	594
2014	76	1136	613
2015	92	1140	619
2016	88	1156	664
2017	98	1252	788



Legenda: M LGA machos inscritos no Livro Genealógico de Adultos
F LGA fêmeas inscritas no Livro Genealógico de Adultos
F LGA LP fêmeas inscritas no Livro Genealógico de Adultos e exploradas em linha pura