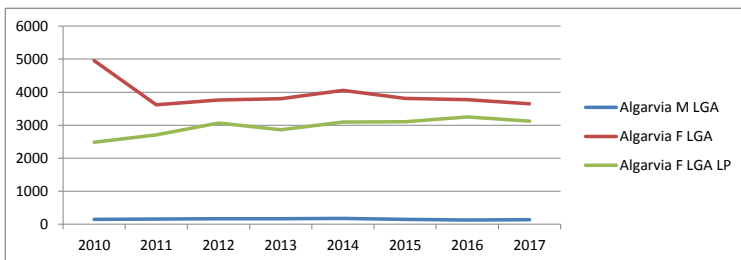
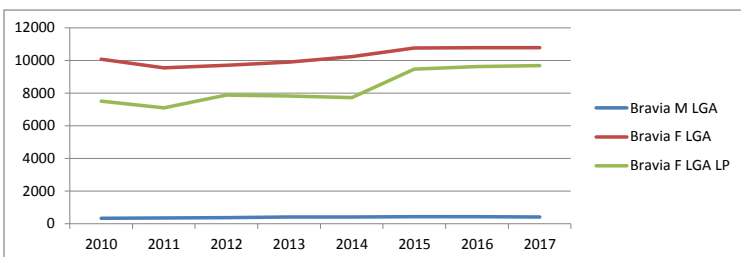


CAPRINOS

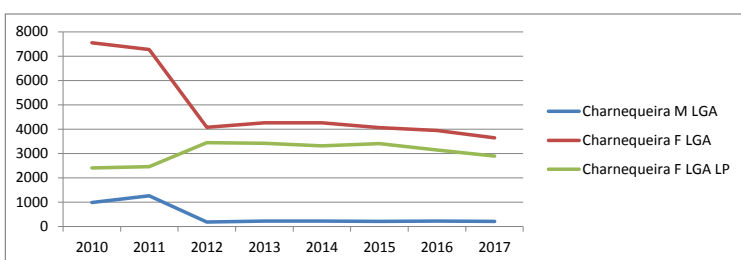
	Algarvia		
	M LGA	F LGA	F LGA LP
2010	147	4956	2484
2011	163	3616	2705
2012	169	3767	3064
2013	166	3799	2860
2014	176	4059	3093
2015	145	3810	3108
2016	135	3775	3251
2017	144	3646	3125



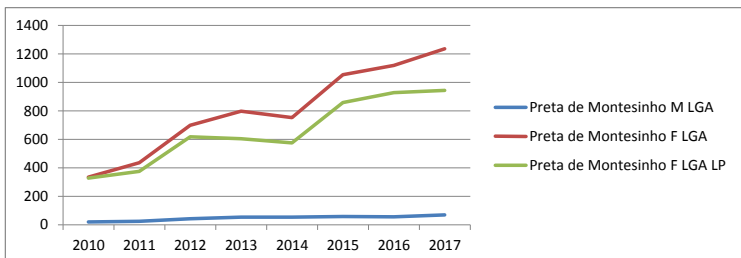
	Bravia		
	M LGA	F LGA	F LGA LP
2010	322	10082	7496
2011	339	9550	7084
2012	369	9706	7878
2013	396	9906	7826
2014	406	10225	7720
2015	425	10753	9474
2016	415	10786	9619
2017	405	10790	9674



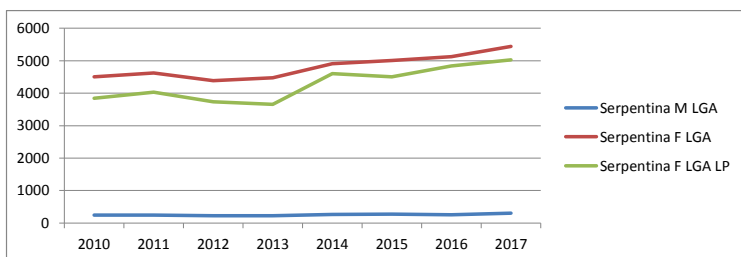
	Charnequeira		
	M LGA	F LGA	F LGA LP
2010	989	7550	2402
2011	1267	7274	2456
2012	184	4079	3438
2013	218	4256	3421
2014	226	4255	3316
2015	205	4068	3401
2016	215	3944	3143
2017	206	3647	2889



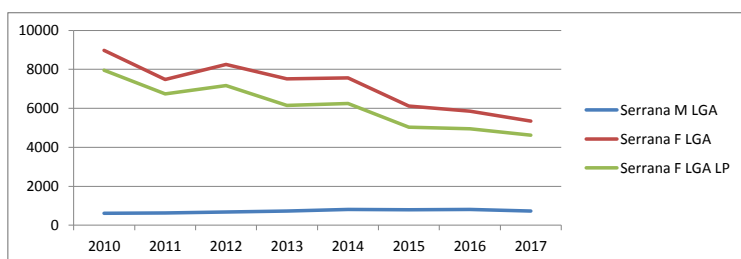
	Preta de Montesinho		
	M LGA	F LGA	F LGA LP
2010	20	335	328
2011	24	436	376
2012	42	700	618
2013	55	799	605
2014	55	753	575
2015	58	1054	858
2016	57	1120	928
2017	70	1237	945



	Serpentina		
	M LGA	F LGA	F LGA LP
2010	241	4508	3840
2011	248	4620	4028
2012	225	4390	3738
2013	222	4477	3661
2014	267	4909	4599
2015	269	5004	4502
2016	254	5124	4840
2017	305	5443	5027



	Serrana		
	M LGA	F LGA	F LGA LP
2010	614	8981	7956
2011	624	7490	6744
2012	679	8259	7173
2013	727	7518	6156
2014	805	7567	6255
2015	798	6113	5035
2016	806	5851	4947
2017	730	5346	4626



Legenda: M LGA machos inscritos no Livro Genealógico de Adultos
 F LGA fêmeas inscritas no Livro Genealógico de Adultos
 F LGA LP fêmeas inscritas no Livro Genealógico de Adultos e exploradas em linha pura