

ERICC

CONTINUITY AND MONITORING OF THE WILD
RABBIT MONITORING PLATFORM



GOBIERNO
DE ESPAÑA

MINISTERIO
DE AGRICULTURA, PESCA
Y ALIMENTACIÓN



Continuity Alert (Faro, 2025):

Risk of the technological platform coming to a halt after the end of European funding.

Administrative Objective:

Secure structural financing (servers and basic IT maintenance) through public funds.

Institutional Transition:

Need to overcome dependence on external funds to ensure stable long-term public support.

Discussion on platform hosting:

In Faro, the different actors discussed the future hosting of the Platform, and the advantages and disadvantages of it being a private or public entity.



THE CHALLENGE OF CONTINUITY

First option:

Ministry of Agriculture (MAPA).

Not possible.

Technological destination

Final hosting on the servers of the Institute for Research in Hunting Resources (IREC).

Current Funding Route:

Organization of maintenance through an direct grant awarded to IREC

Status 2026

Guaranteed economic coverage for the migration and stabilization of the platform.

INSTITUTIONAL HOSTING AND ADMINISTRATIVE SOLUTION



CONTINUITY AND FUTURE OF THE PLATFORM

01 About IREC

Top-tier scientific research center, affiliated with the CSIC, the University of Castilla-La Mancha (UCLM), and the Regional Government of Castilla-La Mancha (JCCM).

02 Data host

It is the entity in charge of the final hosting of the servers and the structural IT maintenance of the Iberconejo Platform.

03 Public sector entity

It offers the environment of stability and maximum IT security necessary for the Autonomous Communities (CCAA) to trust the uploading of their information.



SOVEREIGNTY, PRIVACY, AND INTEROPERABILITY

Interoperability

The use of the SMART app is not mandatory. The system assimilates pre-existing databases (Excel templates, Picolet, OC, etc.)

Data Sovereignty

The ownership and control of the transferred information belong exclusively to the issuing Autonomous Community.

Horizontal Privacy

Restricted permissions architecture. Impossibility of cross-auditing between different Autonomous Communities without express authorization

Role of IREC

Centralized access solely for global analytical exploitation purposes (integrated peninsular models).

GUARANTEE:

During the first year, only data hosting work is being carried out. Not exploitation.

After this first year, the signing of a contract will be evaluated to determine how the data will be used in the manner stipulated or agreed upon by the Autonomous Communities.

MAPA and Autonomous

Communities. Role of supervising the use of the data (this would depend on us).



NEXT STEPS: TRAINING AND USE

3. Resultados: Mapa Jerárquico Integrado

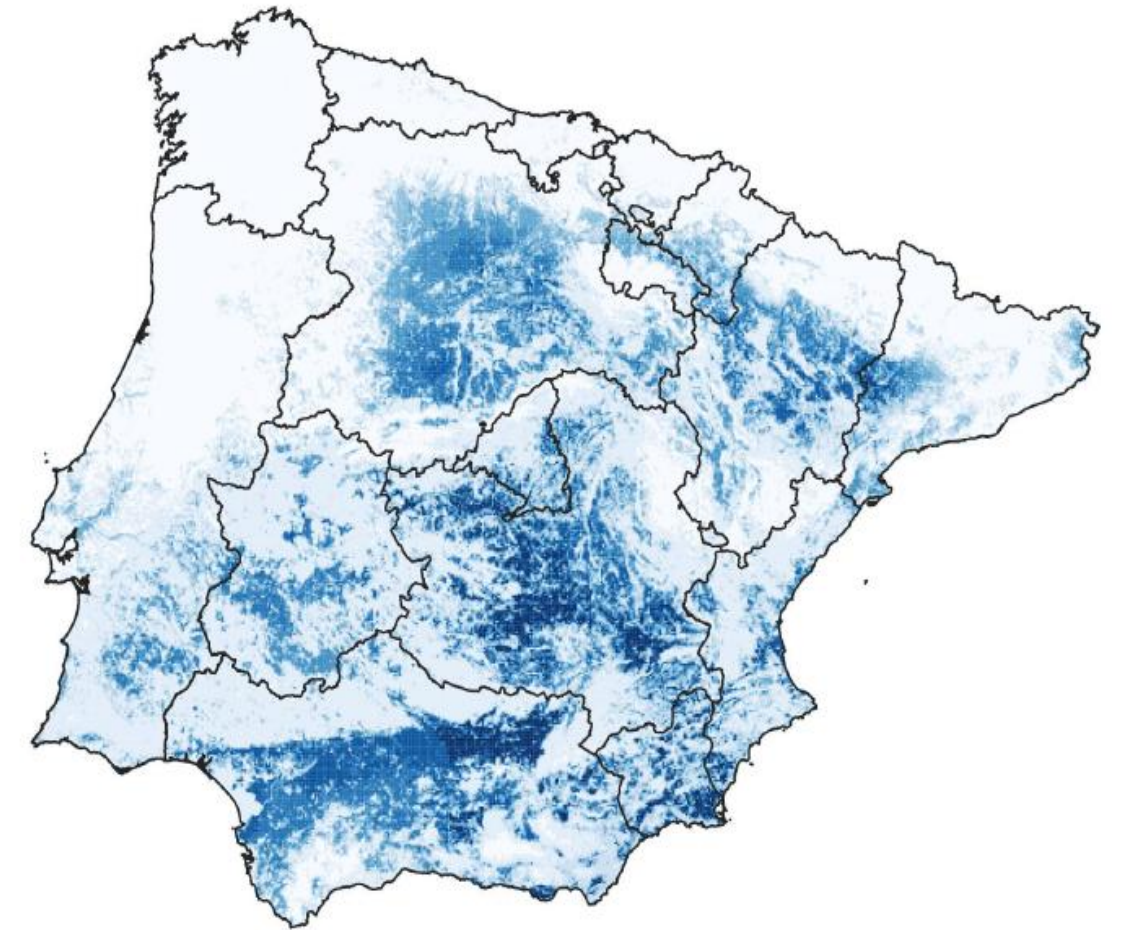
Training Workshop (Autumn 2026):

Practical course organized by MAPA aimed at training regional technicians in the uploading and exploitation of the platform

Use by the Autonomous Communities:

Use of the tool is needed to improve statistics and future use for decision-making, as well as to maintain a good base of densities, trends, etc. If not...

it's an empty shell...



THANK YOU

